



КАРЕН САПРИЧЯН | KAREN SAPRICHYAN

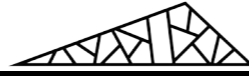
ПОРТФОЛИО | PORTFOLIO

More detailed on www.saprichyan.ru

В начале было Слово...

In the beginning was the Word...

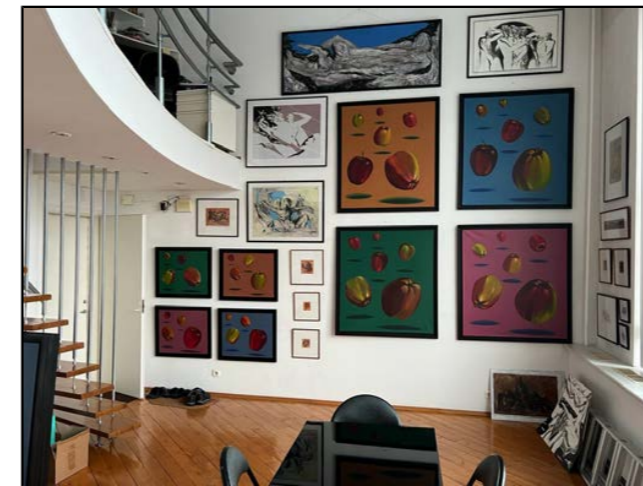
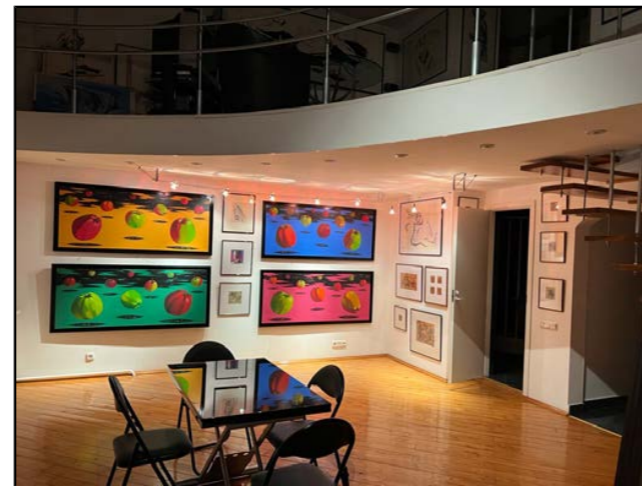
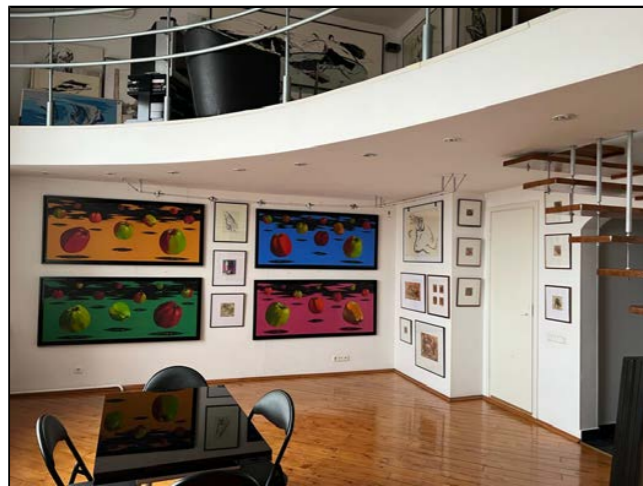
WORKSHOPS



ROJECT WORKSHOP



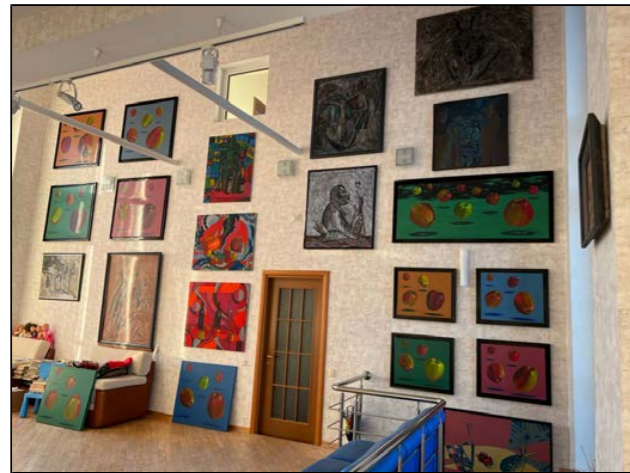
MOSCOW ART WORKSHOP



WORKSHOPS



MOSCOW REGION WORKSHOP





Residential buildings



Medical facilities



Transport facilities



High-rise complexes



Beautification



Town-planning complexes



Hotels



Office centers



Office center



Buildings:

2017 – Crystal Jumerian Hotel in Dubai, United Arab Emirates
2017 – The hotel complex on the street. Ostrovityanova Moscow
2016 – Residential building of “comfort” class on an individual project with non-residential premises and underground parking, Moscow, ul. 2nd Samarinskaya
2017 – Residential complex Magnum. The design of the facades of a multi-storey residential building at the address st. Volodarskogo 1 in the city of Vladivostok
2015 – Facades of the Clinical Diagnostic Center, Moscow, ul. Krasnaya Presnya
2012 – Changes in the architectural appearance of the Poselkovaya and Rosa Khutor substations in the Krasnaya Polyana district in Sochi
2012 – Architectural and artistic decoration of the portals of the combined road Adler–Alpika Service
2011 – Transport interchange “Adler Ring”
2008 – Sculptural composition “Hunter and the Bear” in the park of the museum “Nature and Man” in Khanty–Mansiysk
2007 – Cottage village “Pokrovskoe–Rubtsovo”, Luchinsky rural district, Istra district, Moscow region
2006 – Memorial and Park Complex in Pushkino, Moscow Region
2005 – Composition “All Yugra” in Khanty–Mansiysk
2005 – Accomplishment of the territory adjacent to the Temple of the Ascension in Khanty–Mansiysk
2004 – Facades and interiors of the theater by L. Ryumin
2004 – Sculptural composition “Assol ship” (Accompanying) in the river port in Khanty–Mansiysk
2004 – Painting of the restaurant’s plafond and mosaic in the waiting room of the river port and bus station in Khanty–Mansiysk
2004 – Decorative panels on the facades of the bus station in Khanty–Mansiysk
2003 – Sports Hall of Fame in Khanty–Mansiysk
2003 – Memorable sign to the discoverers of Ugra in Khanty–Mansiysk
2002 – Memorable sign to the discoverers of gas in the city of Berezovo
2002 – Rotunda fountain in the main square of Khanty–Mansiysk
2002 – Paving of st. K. Marx in Khanty–Mansiysk
2001 – Paving of the main square in Khanty–Mansiysk
2000 – Florentine mosaics in the transition to Pushkin Square in Moscow
2000 – Victory Park in Khanty–Mansiysk
2000 – Buildings of the Central Election Commission of the Russian Federation. Florentine mosaics on the floor of the main hall

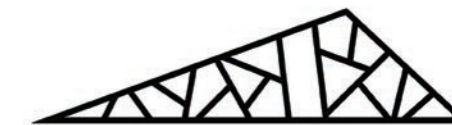
Projects:

Since 2014, Saprichyan and his team have been carrying out a large international project «In the beginning there was a word». For 2020 more than 600 presentations of skyscrapers in 150 cities in 55 countries of the world were fulfilled.
For all projects the author has copyright certificates issued by the Russian Copyright Society KOPIRUS, as well as by the Library of Congress
Karen Saprichyan's partners in this project are the largest engineering and design companies “METROPOLIS” and “INFORCEPROJECT”, the total number of highly professional employees (designers, engineers, architects) in which is more than 450 people. They have completed hundreds of projects, including many unique and high-rise projects.

Awards:

2019–bronze diploma in the nomination “Best solution for reconstruction” for changing the architectural appearance of the electrical substation “Rosa Khutor” Alum Forum 2019
2019–diploma of the Architects Union of Russia “Architectural–art design of portals of the combined road Adler–Alpika service” Alum Forum 2019
2016 – the Moscow government award for the building of “MEDSI” as the best building of Moscow in the field of medicine
2016 – premium “Quality Architecture” for the building “MEDSI”
2015 – the Ministry of Construction of Russia award for the building of “MEDSI” as the best building of Russia in the field of medicine
2013 – Silver Sign of the International Festival “Architecture of 2013” in the category “Restoration and Reconstruction”.
For the work “Changing the architectural appearance of substations” Poselkovaya “and” Rosa Khutor “Krasnodar Territory, Sochi, pos. Krasnaya Polyana”
2012 – Silver Sign Award of the International Architecture Festival 2012 for the work “Ar–chitectural and artistic design of the southern portal of the railway tunnel No. 4 for the project:” Combined (road and rail) road “Adler – Alpika–Mountain resort”
2006 – Silver Sign of the International Festival “Architecture 2006” for the work “Area of the Slavic Writing in Khanty–Mansiysk”

Подробная информация / Detail information
www.saprichyan.ru



КАРЕН САПРИЧЯН | KAREN SAPRICHYAN

1959 – was born in Moscow
1981 – graduated from the MHPU (formerly Stroganov)
Professor of the International Academy of Architecture,
Member of the Union of Artists of Russia,
Member of the Architects Union of Russia





ВЫСОТНЫЕ ЗДАНИЯ | SKYSCRAPERS

ПАРТНЕР ПРОЕКТА : ИНФОРСПРОЕКТ | PROJECT PARTNER: INFORCEPROJECT

Karen Saprichyan's partners in this project are the largest engineering and design companies "METROPOLIS" and "INFORCEPROJECT", the total number of highly professional employees (designers, engineers, architects) in which is more than 450 people. They have completed hundreds of projects, including many unique and high-rise projects.

SKYSCRAPER IN THE FORM OF "N" LETTER FOR NURSULTAN NUR-SULTAN city | KAZAKHSTAN



From a series of international conceptual design, in which all possible variants of capital letters and full names of major cities of the world are used in shaping the architecture of buildings for these cities.

Project: 2019

Address: Nur-Sultan, Kazakhstan

Head of the project Saprichjan K.V.

Architects: Burdin M.M, Kalinin A.O., Kalinina V.A.,
Silacheva I.N., Sinikov Ye.A., Sunyaykin S.I.

Tower height - 375m

Total area of the tower is 105 000 m²

Commercial area-71 000 m²

Karen Saprichyan develops his author's idea in this project: the construction of iconic structures in the major cities of the world in the architectural typology of which the names of these megacities are incorporated.

The project has two components:

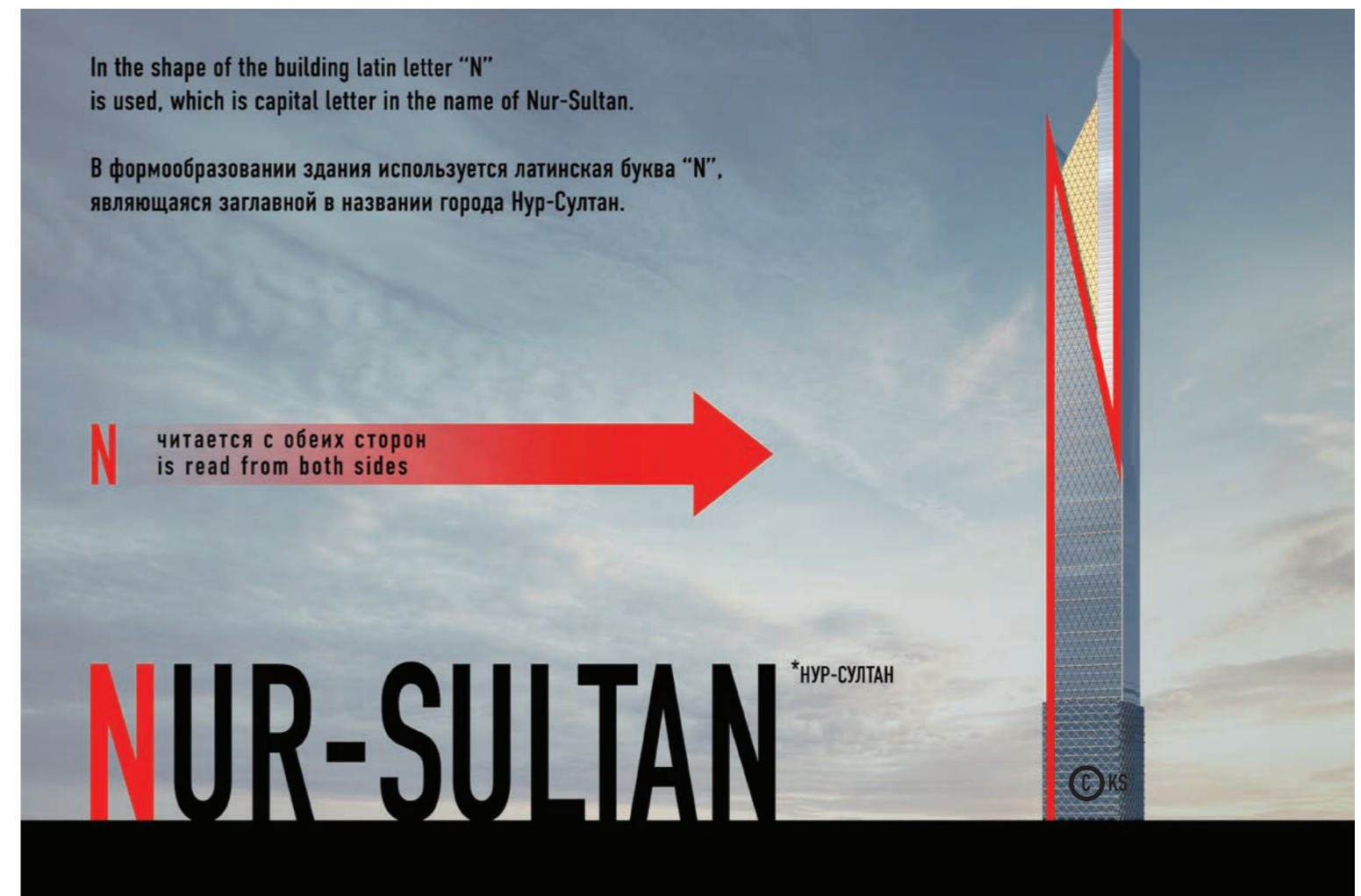
- a) bright architectural image;
- b) large commercial project.

The location is pre-selected and will be definitively determined at the possible implementation of the project.

Made in conjunction with LLC " INFORSPROEKT"

Scope of work:

The stage of "Architectural Concept"





SKYSCRAPER IN THE FORM OF HIEROGLYPHS “重庆” FOR CHONGQING | CHINA



From a series of international conceptual design, in which all possible variants of capital letters and full names of major cities of the world are used in shaping the architecture of buildings for these cities.

Project: 2019

Address: Nur-Sultan, Kazakhstan

Head of the project Saprichjan K.V.

Architects: Burdin M.M, Kalinin A.O., Kalinina V.A.,
Silacheva I.N., Sinikov Ye.A., Sunyaykin S.I.

Tower height - 395m

Total area of the tower is 185 000 m²

Commercial area-125 000 m²

Karen Saprichyan develops his author's idea in this project: the construction of iconic structures in the major cities of the world in the architectural typology of which the names of these megacities are incorporated.

The project has two components:

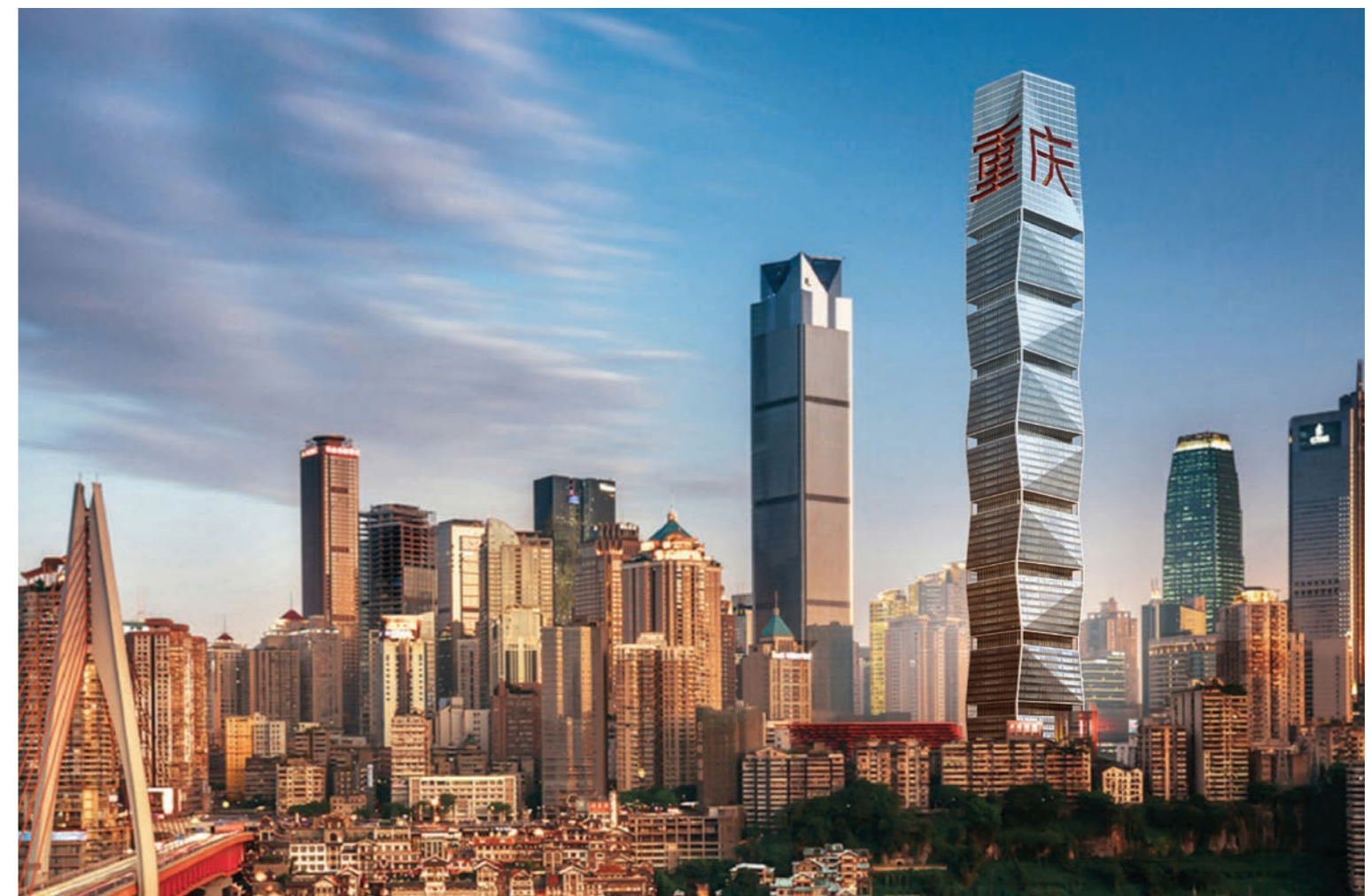
- a) bright architectural image;
- b) large commercial project.

The location is pre-selected and will be definitively determined at the possible implementation of the project.

Made in conjunction with LLC "INFORSPROEKT"

Scope of work:

The stage of "Architectural Concept"





SKYSCRAPER IN THE FORM OF LETTERS "BA" FOR BARCELONA | SPAIN



From a series of international conceptual design, in which all possible variants of capital letters and full names of major cities of the world are used in shaping the architecture of buildings for these cities.

Project: 2019

Address: Nur-Sultan, Kazakhstan

Head of the project Saprichjan K.V.

Architects: Burdin M.M, Kalinin A.O., Kalinina V.A.,
Silacheva I.N., Sinikov Ye.A., Sunyaykin S.I.

Tower height - 250m

Total area of the tower is 134 000 m²

Commercial area-91 000 m²

Karen Saprichyan develops his author's idea in this project: the construction of iconic structures in the major cities of the world in the architectural typology of which the names of these megacities are incorporated.

The project has two components:

- a) bright architectural image;
- b) large commercial project.

The location is pre-selected and will be definitively determined at the possible implementation of the project.

Made in conjunction with LLC "INFORSPROEKT"

Scope of work:

The stage of "Architectural Concept"





TECHNO-PARK CONCEPT RENOVATION OF «NPP KVANT» TECHNICAL TERRITORY



Project 2019

Address: Moscow, Russia

Head of the project Saprichjan K.V.
Architects: Burdin M.M, Kalinin A.O., Kalinina V.A.,
Silacheva I.N., Sinikov Ye.A., Sunyaykin S.I.
Engineer: Gerasimov D.A.

Total area of the plot is 7.5 Hectares
Total surface area of 187, 500m²

The project provides for the renovation of the industrial territory of "NPP Kvant". The main task is to create a modern, multifunctional aesthetic and comfortable environment. The high-rise tower allows to release the territory for recreational park creation. This project will mark a new stage of "NPP Kvant" development.

Scope of work:
The stage of "Architectural Concept"







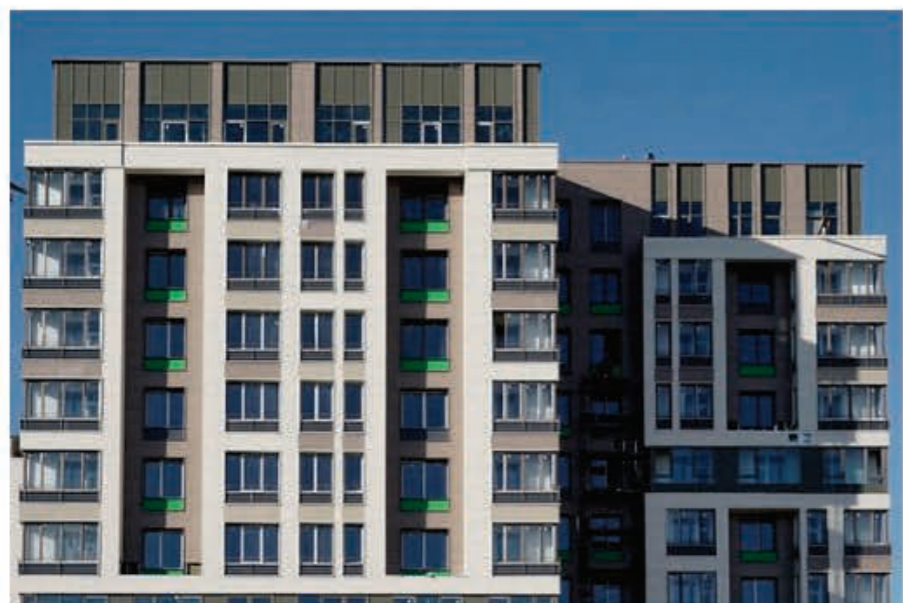
«Crystal Jumeirah Hotel» facades project in Dubai, United Arab Emirates 2016-17



Architectural and town-planning solution of the apart-hotel on Ostrovityanova street in Moscow 2013-17



Residential complex «Magnum». Project of the multistory residential building facades in Vladivostok, Volodarskogo street 1 2013-17



The residential «comfort» class house by an individual project with non-residential premises and underground parking in Moscow, 2 Samarinskya street 2016



Concepts of the architectural decision of facades of the clinic-diagnostic center, Krasnaya Presnya street, Moscow 2014-15



Modification of electric power substations "Poselkovaja" and "the Rosa Hutor" architectural layout in Krasnaya Polyana district, Sochi 2012



Road interchange «Adler ring» 2012



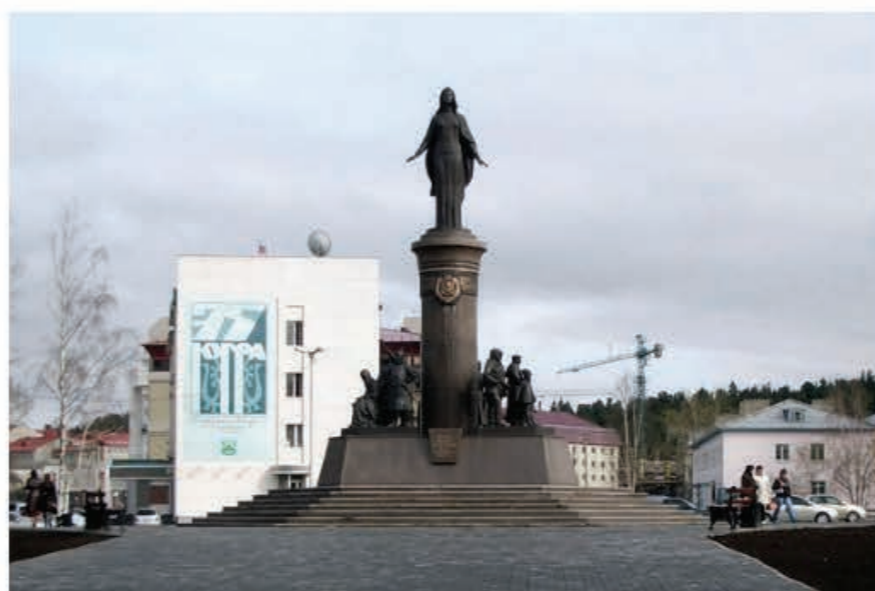
Architecturally - decorating of portals of the combined road Adler - Alpika Service 2012



The sculptural composition «Hunter and Bear» in the park museum «Nature and Man» in Khanty-Mansiysk 2008



Memorial park complex in Pushkino 2006



«All Ugra» composition in Khanty-Mansiysk 2005-06



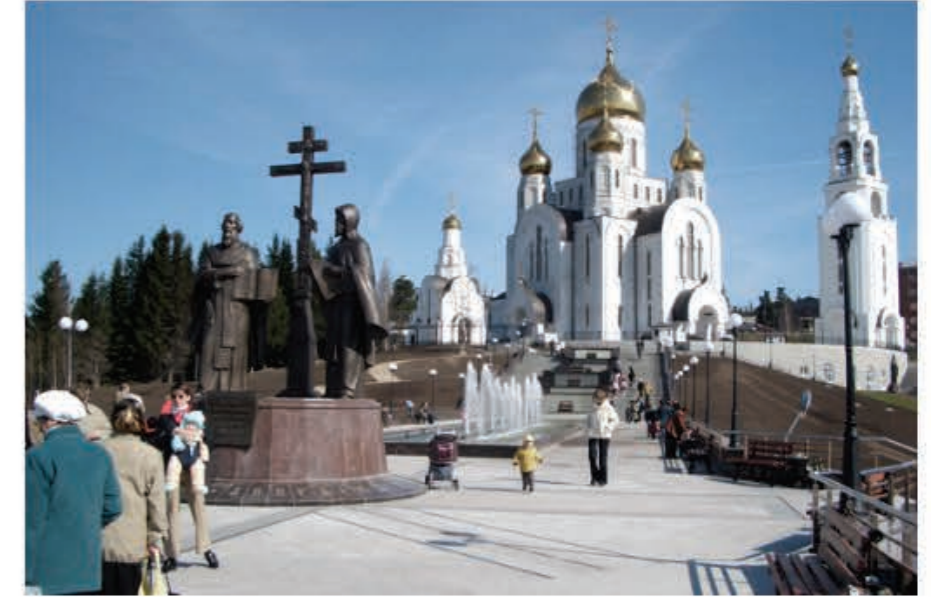
Cottage settlement "Pokrovskoe-Rubtsovo", Luchinsky rural district, Istra district, Moscow region 2007 (in collaboration with Asadov studio)



Design project of a facade and interiors of Moscow cultural center under the direction of Lyudmila Rjumina 2004



Sculptural composition «Ships Assol» (Seeing off) in the river port in Khanty-Mansiysk 2004



Accomplishment of territory, adjoining to the Voznesenye Temple in Khanty-Mansiysk 2005



Painting of restaurant plafond and mosaic in waiting room in river port and bus station building in Khanty-Mansiysk 2004



Square of sport glory in Khanty-Mansiysk 2003



Decorative panels on the bus station facades in Khanty-Mansiysk 2004



Memorable sign to gas discoverers in Berezovo 2002-03



Fountain-rotunda on the main square of Khanty-Mansiysk 2001-02



Memorable sign to Yugra discoverers 2000-03



Florentine mosaic in transition on Pushkin Square in Moscow 1989-2003



Victory Park in Khanty-Mansiysk 1999-2000



Russian Federation Central Election Commission building. Florentine mosaic on the floor of the main hall



© KS 2019 All rights reserved

Detail information on www.saprichyan.ru